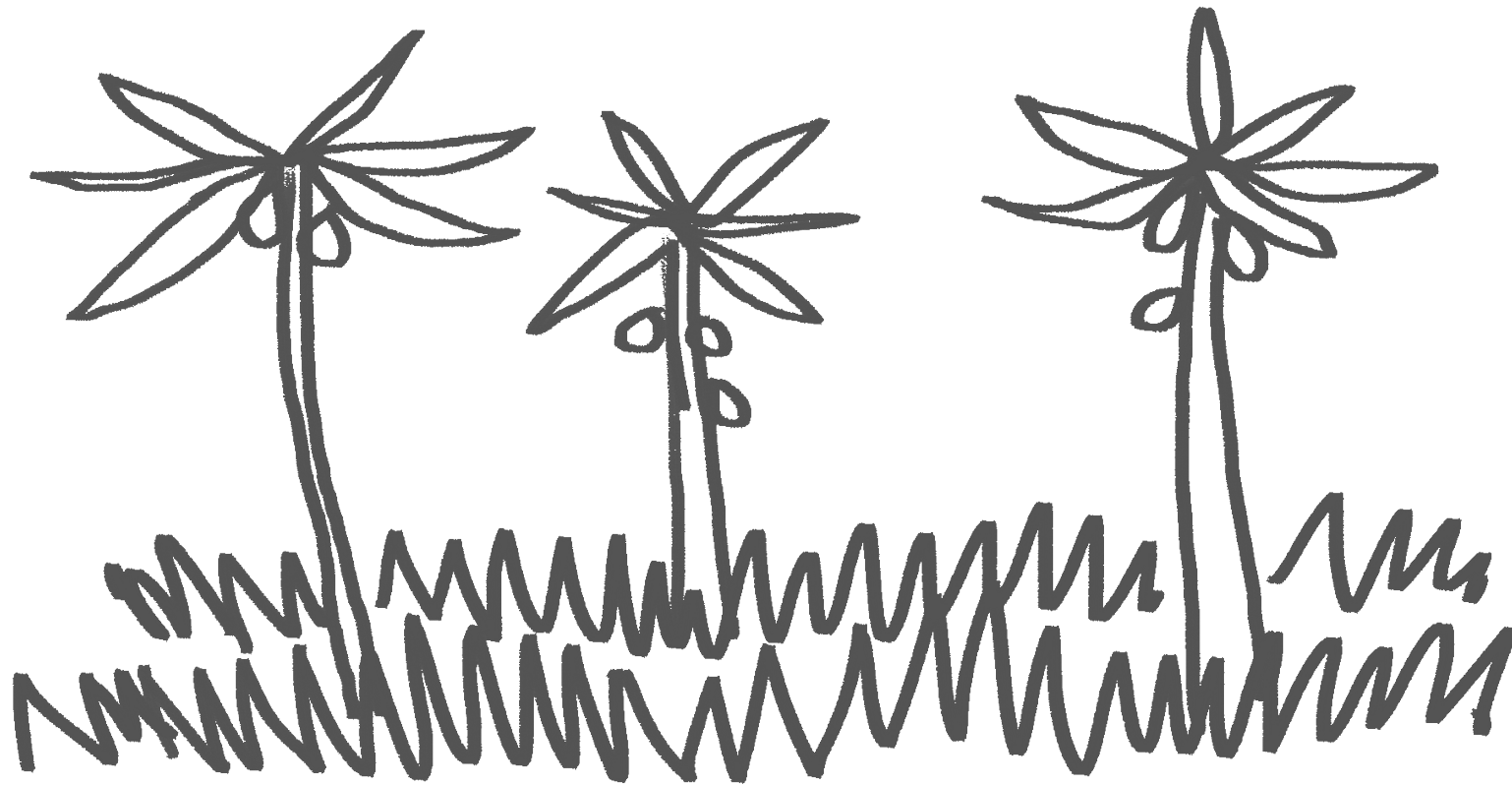




**Draw beautiful
birds and amazing
animals in the
rainforest.**



**FAIRTRADE
FOUNDATION**

GUARDIANS OF THE RAINFOREST

KEY WORDS

Key word	Definition
biodiversity	the existence of a large number of different kinds of animals and plants which make a balanced environment
forest friendly farming	a method of farming where farmers work together, farm sustainably and protect animals and birds that live in the forest
subsistence crop	a crop that people grow to use or eat themselves in order to keep alive
climate	the regular pattern of weather conditions of a particular place
environment	the natural world in which people, animals and plants live
black pod	a plant disease which turns cocoa pods brown or black

GUARDIANS OF THE RAINFOREST

WORD SEARCH



R	R	E	G	C	A	P	N	E	E	T	T	H	P	Z
C	J	Q	L	O	T	S	E	R	O	F	N	I	A	R
L	W	B	D	O	N	Q	E	T	B	R	P	Z	S	N
I	B	I	O	D	I	V	E	R	S	I	T	Y	F	V
M	M	I	P	Z	P	F	G	Q	B	V	E	L	T	B
A	G	O	P	P	I	H	Y	M	G	Y	P	T	T	D
T	W	F	B	E	N	V	I	R	O	N	M	E	N	T
E	O	G	Z	V	C	X	Q	D	K	I	H	O	N	M
Q	A	Q	B	Z	N	T	F	O	N	M	A	S	P	N
Y	I	E	O	D	K	N	I	P	N	N	D	E	H	K
Z	U	Q	G	U	C	A	M	K	Q	Z	A	Q	S	N
F	Z	B	P	U	Z	H	T	C	Z	N	F	Z	U	W
N	J	I	M	E	E	Z	N	A	P	M	I	H	C	C
N	O	B	R	A	C	V	B	L	K	Z	M	K	I	Z
X	I	G	Y	C	P	O	H	B	J	F	A	T	W	E



BIODIVERSITY
CHIMPANZEE
PYGMY HIPPO
RAINFOREST

CLIMATE
ENVIRONMENT
CARBON
BLACK POD



FAIRTRADE
FOUNDATION

GUARDIANS OF THE RAINFOREST MATCHING CARDS

black pod

subsistence crop

biodiversity

climate

forest friendly farming

environment

a crop that people grow
to use or eat themselves
in order to keep alive

the regular pattern of
weather conditions of a
particular place

the natural world in which
people, animals and plants
live

a plant disease which
turns cocoa pods brown
or black

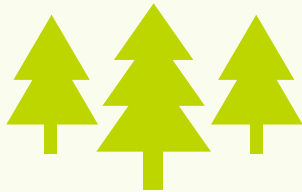
the existence of a large
number of different kinds
of animals and plants
which make a balanced
environment

a method of farming where
farmers work together, farm
sustainably and protect
animals and birds that live
in the forest



GUARDIANS OF THE RAINFOREST DISCUSSION CARDS

Why is it important to protect the world's forests?



Imagine if you could not go to school or visit the doctor when you were sick.

How would this affect your life?



If you want to protect the forests, you have to protect the people.
Discuss this statement.



Discuss three ways that the farmers of Ngoleagorbu have changed the way that they farm.

